



## Quarterly General Meeting

**April 29, 2021, 7 PM  
Via Zoom!**

**Our Special Guest is  
Ashton Strong, TxDOT Dallas  
District, Project Manager and  
Team**

Official Newsletter of the Wynnewood North Neighborhood Association

### A Word from Our President | Denise Requardt

Hello Neighbors,  
We finally see some light at the end of the pandemic tunnel! With the rollout of the vaccine we are getting closer and closer to normal life again. Hope you all are doing well and getting ready for the great Spring weather ahead.

Be watching out for Oak Cliff Community Meetings announcements posted on Nextdoor and other social media sites. Most are in reference to potential rezoning changes in our surrounding area. I have noticed that several neighbors attend these meetings and I would appreciate any input you all may have that I can take back to the City Planning Commission.

The Tyler Station Proposed Rezoning has been an ongoing topic. The Presidents of Elmwood, Tyler-Polk and myself are still working together meeting with the city teams and will continue to post pertinent updates. Coming up soon will be several community meetings presented by the West Oak Cliff Area Plan Task Force and all meeting dates have been posted. If anyone has questions in reference to upcoming Oak Cliff Public Community Meetings, please reach out to me.



These city planning projects will ultimately guide and predict the development of this part of the city for years to come. It is an extremely important process, and neighborhood input is critical.

Great News!! WNNA was able to secure a Partnership Agreement with Methodist Dallas Medical Center again this year. They have awarded WNNA with \$2,500.00 and Methodist Dallas and WNNA will work together following the stipulations of the agreement throughout the year. You will see the MDMC Banner on our website and e-blasts and can click on the banner to find a lot of helpful information such as; COVID-19 updates, health resources, community stories, etc.

I am happy to announce that Barb Nunn has joined our Publications Committee. Barb and Lynn are working together to ensure the quarterly Newsletters are created, composed, to the printer and on to block captains for distribution.....and this is no small task!! For this Spring Newsletter Barb took the lead, and she did a fantastic job!! Thank you both for all your hard work on the Newsletters and your continued support within our neighborhood.

A big thank you to all who have been sending in donations. This is so much appreciated and helps keep Wynnewood North up and running throughout each year!

#### About Us

WNNA is an 501(c)3 non-profit organization.

Donations are tax deductible and can be made by mail, at general meetings, directly to our treasurer, or by visiting [wynnewoodnorth.org/donate](http://wynnewoodnorth.org/donate).

Receipts are provided upon request.

#### Contact Us

Online	<a href="http://www.wynnewoodnorth.org">www.wynnewoodnorth.org</a>
Email	<a href="mailto:info@wynnewoodnorth.org">info@wynnewoodnorth.org</a>
Mail	PO Box 3872   Dallas, TX 75208
Nextdoor	<a href="http://wynnewoodnorth.nextdoor.com">wynnewoodnorth.nextdoor.com</a>
Facebook	<a href="https://facebook.com/wynnewoodnorth">facebook.com/wynnewoodnorth</a>

## A FEW SAFETY TIPS FROM YOUR VOLUNTEERS IN PATROL (V.I.P)

Wynnewood North is getting younger. Let's make sure our neighborhood stays safe for kids. Unfortunately, no neighborhood is completely immune to crime. However, there are steps you can take to help keep your family and your neighborhood safe.

Know where your children are. Have your children tell you or ask permission before leaving the house and give them a time to check in or be home. When possible, have them leave a phone number of where they will be.

Help children learn important phone numbers. Have your children practice reciting their home phone number and address, and your work and cell phone numbers.. Tell your children where you will be and the best way to reach you.

Set limits on where your children can go in your neighborhood. Do you want them crossing busy roads? Playing in alleys or abandoned buildings? Are there certain homes in your neighborhood that you don't want your children to go to?

Get to know your children's friends. Meet their parents before letting your children to go to their home and keep a list of their phone numbers. If you can't meet their parents, call and talk to them. Ask what your children might do at their house and if they will be supervised.

Choose a safe house in your neighborhood. Pick a neighbor's house where your children can go if they need help. Point out other places they can go for help, like stores, libraries, and police stations.

Teach children to settle arguments with words, not fists. Role-play talking out problems, walking away from fist fights, and what to do when confronted with bullies. Remind them that taunting and teasing can hurt friends and make enemies.

### **Volunteer In Patrol (V.I.P.)**

#### **Quarterly Raffle**

#### **Winners**

**JAN – ALLEN ANDERS \* FEB – JANE SULLIVAN \* MAR – OD VEGA**



The VIP Gift Card Program started in 2014. The board decided to show our appreciation to those who volunteer their time by raffling off a \$50 gift card to our VIP's who volunteered to patrol and be the eyes and ears of the DPD as VIP is a program associated with the DPD. A VIP patrolee has their name put into the raffle for every patrol they complete in a specific month. (in otherwards, if you patrol 3 times in January your name goes into the hat for the January raffle 3 times). The winner of the raffle is done by month, so we have 12 winners each year. A VIP is only eligible to win once a year. The \$50 gift cards are raffled off at the general meeting and dispersed to the VIP patrolee that was chosen.



**Get a quote  
and I'll donate  
to a cause.**

**Ray Scott, Agent**  
4144 N. Central Expy, #700  
Dallas, TX 75204  
Cell: 214-476-2918  
ray.scott.efmv@statefarm.com

**Neighborhood of Good® –  
Quotes for Good™  
makes it easy to give back.**

Just get a quote and I'll give \$  
\$50 to a local cause. Right  
now, my office is helping raise  
money for Wynnewood North  
Neighborhood Association.

Let's talk today.



1901976

State Farm  
Bloomington, IL

## VIP Training

The Dallas Police Department (DPD) had put a hold on all VIP training classes since March due to Covid-19. DPD has been working on putting together a Zoom VIP Training class for months and have finalized the curriculum for a training class. I have heard from a few neighbors who would be interested in being on VIP patrol, but due to the fact no classes were available I have not pursued classes since March. The Zoom class will probably be about an hour and be on a Saturday morning. No time has been set as of today. If you are interested please email me at [crime@wynnewoodnorth.org](mailto:crime@wynnewoodnorth.org) and I will get you the forms you need to fill out.

A couple of the benefits of the patrols are 1) Keeping neighborhood safe; 2) Meeting new neighbors; 3) a chance at winning a \$50 gift card to one of our surrounding restaurants; and 4) Flexible patrol times to fit into your busy schedule.

The VIP training course will assist in recognizing suspicious behavior. VIP's make sure no one leaves a garage door open, assist in making sure delivered packages are not able to be seen from the street by hiding them from the criminal element, notification of specific information on criminal activity in and around our neighborhood, and assist in educating neighbors and notifying the DPD of any suspicious behavior while on patrol.

HELP KEEP WYNNEWOOD NORTH safe by being a part of the VIP program.

ALL OF OUR TECHNICIANS OUR EPA CERTIFIED, STATE REGISTERED, AND BACKGROUND CHECK APPROVED

**Sala** *Since 1972*  
**Air Conditioning**



turn to the experts™

**\$69.00**  
Pre-Season  
Special\*

**We sell & service all makes and models!**

Air Conditioning • Furnaces • Heaters  
Heat Pumps • Boilers • Chillers  
UV Lights • Cooling Towers • Ductwork  
Thermostats • Humidifiers • Air Cleaners

24 HOUR EMERGENCY SERVICE

**214-742-7252**

FREE SURVEY FOR EQUIPMENT  
REPLACEMENT



[www.SalaAir.com](http://www.SalaAir.com)

TACLA019484E

\*Pre-Season \$69.00 special periods for Heating Season (October 1st - December 31st) and Cooling Season (March 1st - May 31st)





## Pet Corner

### **Society for Companion Animals – Animal rescue and transport**

*Contributed by Denise Requardt*

Wynnewood North neighbor Tawana Couch is founder and President of Society for Companion Animals.

SFCA serves a critical need in the North Texas community and throughout Texas by rescuing dogs from high-kill shelters and from the streets. SFCA steps in to rescue these very adoptable but endangered dogs, flying them to locations where there is a shortage of adoptable animals, such as in New York and New Jersey where families are anxious to provide forever homes.

With the fabulous Spring weather upon us it's that time of year again when American Airlines allow the animals to be flown to locations SFCA works with.

Volunteers are needed to help make this all happen. Examples of volunteer work... and this does not take but a few hours of time when needed: unload dogs off vans that transport from down South to the kennel where dogs are housed, loading dogs back on a van to transport to the airport, foster for a few days while waiting on flights, transport a dog to the vet for checkup prior to flights. Also, there are crate days where volunteers meet to ensure crates are ready for transport. There are many more volunteer opportunities noted on the website.

If you are interested in this great volunteer opportunity contact Tawana 214-336-9729 or email her at [tawanacouch@me.com](mailto:tawanacouch@me.com) - The website is <https://www.societyforcompanionanimals.org>

### **Outdoor Barking Dogs**

*Contributed by Denise Requardt*

Barking is one of many forms of vocal communication for dogs. People are often pleased that their dog barks when outdoors because it alerts them to the approach of people to their home or it tells them there's something that the dog wants or needs. However, sometimes a dog's barking can be excessive.

The City of Dallas ordinance states there is a 15 minute rule for barking dogs. A dog barking in excess of this would be considered a violation of this ordinance.

Dogs are great, loyal, loving companions. But, many have their moments and love to hear themselves bark, chase squirrels, and let you know when the lawns in the neighborhood are mowed, trash trucks rolling down the street, unusual noises, and on and on.

I personally experience this with our wonderful Lab, Neiko. I work from home and try my best to resolve the barking in a timely manner, but many times a challenge. I always think about that '15 minute rule'. It is important all of us with dogs that spend a lot of time outdoors try to do the same.

Great information can be found on several websites on google including:

<https://dallascityhall.com/departments/dallas-animal-services/Pages/Barking-Dogs.aspx>

<https://www.asPCA.org/pet-care/dog-care/common-dog-behavior-issues/barking>



## 2021 HERITAGE OAK CLIFF GRANTS

*Contributed by Cynthia Michaels*

Founded in 1975, Heritage Oak Cliff includes more than 30 member neighborhoods stretching from Interstate 30 south to Camp Wisdom Road. From long-established neighborhood associations to smaller neighborhood groups just getting organized, all contribute to the beauty, diversity, and vitality that is Oak Cliff. For over 40 years, Heritage Oak Cliff has produced Dallas' longest-running home tour each autumn. Our largest annual fundraiser, the proceeds of the tour are used to grant awards to member neighborhoods for conservation, beautification, preservation, and other projects that enhance the character and charm of the area.

Heritage Oak Cliff was unable to have a Tour of Homes in 2020, which is the major fund-raising event of the year. Because of this fact, no monies were raised for grants that will be awarded in 2021. HOC still wanted to be able to award grants but on a smaller scale. At this time, only \$15,000 has been designated for the 2021 grants. In 2020, the monies allowed for grants was \$32,000.

Wynnewood North will not be seeking additional grant funds for special projects. We will apply for grant funds for the following projects: (1) Teacher Appreciation-\$500. (2) Newsletter \$1,100. (3) Web Hosting \$972 (4) Triangle Maintenance \$2360. These numbers are based off 2020 figures. They will be adjusted as needed when the grant application is submitted.



### **A message from our Community Partner, Methodist Dallas Medical Center**

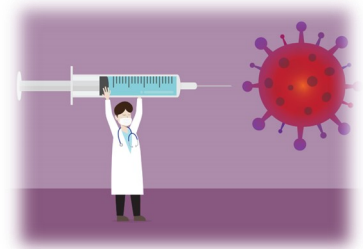
Methodist Health System, our parent organization, is currently providing COVID-19 vaccines to adults of all ages, while supplies last.

The vaccination clinic is located at Methodist Dallas Medical Center at 1441 N Beckley Ave., Dallas, TX 75208.

If you have not already received your first shot, **we hope you will sign up to get your vaccine at Methodist Dallas!**

A few things to know:

- ⇒ To schedule an appointment go to our self-scheduling tool: <https://vaccine.mhd.com/MyChart/covid19/#/>
- ⇒ Appointments are currently available. But if you check the site later on, and find that there are no free appointments, don't be discouraged. Just keep checking the site later on because MHS updates the site as more doses become available



Additional more detailed information on the clinic can be found <https://bit.ly/3wR2XaX>





Expect the best from  
**Wynnewood's  
locally-owned  
roofing team**

*Wynnewood  
North*



Christopher Averite  
chris@tagrmtx.com  
214-642-5366



Taylor Gilbreath  
taylor@tagrmtx.com  
940-999-0519



**ROOFING & CONSTRUCTION**  
**tagrmtx.com 214-642-5366**

We are here to help you with all your roofing needs. Our expertly trained staff can recommend options that best compliment your style and our neighborhood.

**Free inspection and estimate • Insurance claim assistance • 100% financing available**

### Destruction and Re-Creation in the Garden - 2021

*Contributed by Paul Jolly*

You may have been by the beautiful garden at our house on N. Manus. I can say this without tooting my own horn, because I can take very little credit for this. My wife is the gardenista in the family. In nearly forty years of marriage to a dedicated gardener, I've learned that to Marilyn Jolly, the garden is a process, a story that unfolds over years, that involves a lot of observing, experimenting, and learning. Sometimes things work and sometimes they don't, and you try to learn something either way.

We lost plants in the February power-off deep-freeze, like many of you did. I talked to Marilyn about the garden and her thoughts in this time of loss and rebuilding.

Q: Can you give a quick history of this garden?

*A: I began creating our garden at 439 N. Manus in the spring of 2014 after moving into our home in Wynnewood North in February. I had left a garden that I developed over 20 years in East Dallas and was eager to start a different kind of garden. The East Dallas location was primarily shade or part-sun areas with large trees and a much flatter lot. Our new (current) space offered much more sun, and had very few plants worth saving other than a few trees and the challenge of a sloping lot.*

*I was excited to try a more drought tolerant landscape and some plants that I had not been able to grow in my previous garden. I began with the front yard in March, putting in a large sweep of landscaping along the street and following the driveway down to the level below. We put in a new bed in front of the house and a walkway connecting the front porch to the driveway. The following spring, I added another layer of beds behind the original one, eliminating more of the lawn area.*

*At the same time I started the front yard landscaping, I put in a long cut flower bed in the back yard with a gravel area in front of it where galvanized stock tanks were placed for growing vegetables. A gravel and stepping stone path runs along side the cut flower bed and joins a gravel path that flows through the rest of the garden. Over the next few years we completed backyard construction that included my studio building in the back yard, a little concrete patio, and a retaining wall behind the house that incorporates a water feature. Placing the retaining wall created a large flower bed near the house, and on the other side, an area of gravel and concrete pads for sculpture display.*

*The rest of the drought tolerant plantings were added as the hard surfaces were developed. We also added a covered deck near the long cutting garden. One of the most challenging aspects of the sloped site has been controlling the water runoff. We had to install multiple French drains and gutters to keep the landscaping from floating away in hard rains. Last summer I added a dry riverbed on the southeast side of our house to control water runoff on that side of the house.*

Q: When the deep freeze ended, and the power came back on, what was the damage?

*A: I had fairly extensive damage of the most Mediterranean and southwestern type plants: Agaves, cactus, several large rosemary plants, large oregano plants, aloes, a couple of olive trees, bay tree and a number of smaller more tender plants that usually make it through the winter. Since we were without power for extended periods, almost everything in my greenhouse died-citrus trees, many succulents and cactus, etc.*

Q: How were the effects of this cold spell beyond the "usual"?

*A: I think it was the duration of the cold weather that was the big problem. I usually cover the tender plants with row cover in a normal winter during freezing weather and they make it, but it typically does not last for so many hours like this last freeze.*





---

## -Destruction and Re-Creation in the Garden - 2021 (Continued)

Q: How has the wildlife in the garden fared through the freeze?

*A: From the looks of things, it seems most of the wild life came through the bad weather just fine. We had several bird feeders out and they were heavily trafficked during that time. I did find a couple of small dead birds in our yard once things thawed out and saw a few dead ones on my walks in the neighborhood. I am seeing lizards now and many birds, and of course the squirrels. We have been hearing a lot of owl activity at night in the greenbelt behind the house.*

Q: How have you started to repair the garden?

*A: I have been spending many hours in the garden either pruning back dead plants or removing them, shaping up the ones that survived, moving plants to new locations in the garden where I think they will do better or taking divisions from existing plants to move to new places. I have put in a few new plants to fill in blank spaces, but it is still a bit of a waiting game to see if some of the damaged plants start to grow again. It may be some time before some of the larger hedge-type plants show good signs of recovery, if at all. As a gardener who likes to see a more full garden, it has been hard to be patient with this.*

Q: Are you changing your garden plan in light of the record cold we had?

*A: I am rethinking what I grow to replace the plants that did not make it. I noticed the yuccas and grasses seemed to be unfazed by the extreme cold, so I have put in some more yuccas and have moved some grasses around. Old standards like nandina, iris, day lilies, hollies, yaupons, and bulb plants like lilies seemed to take the extreme weather in stride. Plants like these have been grown successfully for a long time in this area, so I may be using more of them. I still love the structure you get with the large agaves, but may not depend so much on them for focal points. The plants like the olive and bay trees I had were always risks, but that is my gardener's thrill seeking. They did well for several years.*

Q: What long-term plans do you have in mind for the garden?

*A: My long term plans are to keep gardening and learning about gardening and plants, to become a more skillful gardener and to have gratitude for the time to do the gardening work. I am still pondering ideas that are not too cost prohibitive to eliminate more of the lawn on the sloped area of my front yard. I would like to incorporate more beds with wild flowers and grasses that help feed and encourage pollinators and birds.*

Q: Is there anything you would like to add, that I haven't asked you about?

*A: I would like to encourage our neighbors to get outside and garden even if it is only a small plot, a raised bed or pots on the patio, and to share that with their children so they will be able to become better observers of the natural world around them. Plant seeds, learn about soil, eat something they grow, listen to the birds and notice bugs and little critters that are all around us and benefit us in so many ways.*

Some good resources are:

[www.thedallasgarden.com](http://www.thedallasgarden.com) -great advice for gardening in the area, news of plant sales, when to plant, etc.

[www.botanicalinterests.com](http://www.botanicalinterests.com) -for heirloom seeds, variety of seed mixes, native seed plant mixes

[www.dirtdoctor.com](http://www.dirtdoctor.com) -Howard Garrett- he has a number of books, a radio show and writes a column for the Dallas Morning News, speaking engagements. He is my gardening guru for organic gardening in this area

[www.gardenista.com](http://www.gardenista.com) – Search for the article “Dirty Secrets: 9 Ways to Improve Garden Soil”

## Methodist Dallas Medical Center – Health / Wellness Highlights

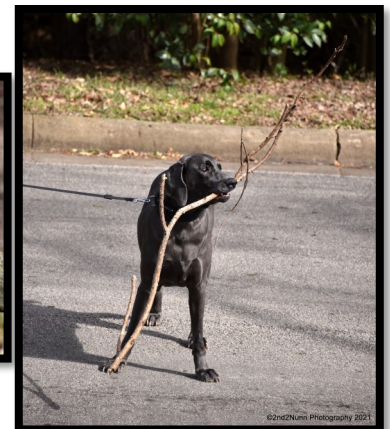
### For COVID-19 long-haulers, heart damage can last a lifetime

“There is a trend among recovering COVID-19 patients who suffer from abnormal heart damage and issue, including chest pain and rapid heart rates” **MJ Sidhu, MD**, Medical Director of Cardiology at **Methodist Dallas hospital**. One of the biggest indicators of cardiovascular complications is persistent shortness of breath.” Thousands of those infected with the coronavirus may suffer quietly for months, oblivious to the permanent heart damage COVID-19 may be doing to their bodies.



If you’ve recovered from a coronavirus infection, even if you were not hospitalized, and have continued to have shortness of breath more than 30 days after infection, **please consider scheduling a checkup with cardiologist**. Call 214-933-7430 to schedule an appointment.

To learn more and read one patient’s experience with post-COVID-19 cardiac syndrome, **go to ShineOnlineHealth.com** and search for “COVID-19”



## SPEED HUMPS UPDATE

*Contributed by Cynthia Michaels*

A BIG thank you to the ones that responded and volunteered to help obtain signatures for the various blocks and streets. The Board decided at this time to start off with the 600-700 blocks of S. Manus and Monssen. Katherine Espinoza will be obtaining signatures for Monssen. Mary Ann Jenkins will be obtaining signatures for S. Manus. Keep in mind, this is just the first step. If we do not get 2/3 of the residents to sign the poll, then we cannot proceed. Thank you for your patience as we proceed with this process.

Please feel free to contact me should you have any questions. [vp@wynnewoodnorth.org](mailto:vp@wynnewoodnorth.org)





## STREET LIGHTING IN WYNNEWOOD NORTH

*Contributed by Cynthia Michaels*

During our January neighborhood meeting it was mentioned that certain areas of Wynnewood North were lacking with regards to street lighting. I talked to Mike New, with the City, who provided me with the following information. The guideline is a street light not farther than 400 ft apart. If someone wants a street light the cost is \$1,000. There must be a clear path of at least 5 ft wide and 15-20 ft tall. The requestor must provide the required clearance by having trees trimmed, etc. A permit is required. Residences within 100 ft of the proposed new light must sign a petition agreeing to the new street light.

Mr. New drove our neighborhood and all of the street lights are within 400 ft of each other. Most are within 200 ft of each other. I also drove the streets and reviewed where all the street lights are located and obtained the approximate distances between each one.

Therefore, if you would like a street light in your area, you must be willing to pay the \$1,000 to have it installed, obtain signatures of all those within 100 ft. of the proposed new light, and provide a 5' wide by 15-20' tall clearance from the back of the alley to the street.

If you need additional information or have any questions, please feel free to contact me at [beautification@wynnewoodnorth.org](mailto:beautification@wynnewoodnorth.org).

## Yard of the Month

**Feb - 715 Woolsey  
Gary Ellis**



**March - 521 Heyser  
Pat & Greg Parrish**



**April - 619 Woolsey  
Tawana Couch**



Every month an e-blast goes out to our neighborhood and posted on Nextdoor that it is time to nominate a yard to be recognized as Yard of the Month.

The winner receives a \$50.00 gift card. I would like to encourage each and every one of you to participate in the nomination process. It is easy. All you have to do is click on the link in the email to nominate a yard or go to our webpage ([www.wynnewoodnorth.org](http://www.wynnewoodnorth.org)) and complete the form. The form is under Beautification, then Yard Of The Month, then Nomination Portal. You can also just email me at [beautification@wynnewoodnorth.org](mailto:beautification@wynnewoodnorth.org). The Beautification committee votes to decide the winner.

A yard can only win once each calendar year. Please drive the neighborhood and see whose yard deserves this award!



### Bulk Trash Information

Residential customers receive brush and bulky trash curbside collection of up to 10 cubic yards each month. Once per calendar year, customers may request an oversize collection of up to 20 cubic yards by calling 3-1-1 or submitting a service request online.

Set outs exceeding the 10 cubic yard limit (or annual 20 cubic yard limit) or which contain prohibited items will generally be collected, and the customer will automatically be billed for the non-compliant set out at a rate of \$60 per 5 cubic yards, billed in 5 cubic yard increments. Major violations (generally over 120 cubic yards) will be referred to Code Compliance for abatement.

Set out brush and bulk trash on these dates only  
May 20-23  
June 24-27  
July 22-24

More information at [https://dallascityhall.com/departments/sanitation/Pages/brush\\_and\\_bulky.aspx](https://dallascityhall.com/departments/sanitation/Pages/brush_and_bulky.aspx)

### Welcome New Neighbors!

Julie Eastland and James Jeffers at 442 Monssen.

Kam Naidoo and son Neel at 523 Monssen.

Justin and Sarah Lott at 410 Monssen.

Manda Forbus and Olivia Cook at 457 Mayrant.

Celeste and Byron Sanders, children Bailey and Bryce at 708 Mayrant.



### It's My Park Day!

Thank you to the neighbors who came out to clean up the neighborhood on Saturday morning, April 10th! Your efforts help make ours the best neighborhood in Dallas!





## Beautification

### **City of Dallas Watering Restrictions - <https://savedallaswater.com>**

It's that time of the year again! Irrigation of landscaped areas with hose-end sprinklers or automatic irrigation systems is limited to no more than twice per week according to the MANDATORY Twice-Weekly Watering Schedule. No watering is allowed on Mondays, Tuesdays or Fridays and from April 1-October 31, watering is prohibited between 10 a.m. and 6 p.m. on all days of the week, including the allowed watering days. Now is a great time to check for leaks as well.

Drip irrigation, soaker hoses and hand watering are allowed on any day and at any time.

### **Last Digit of Address Watering Days Allowed**

Even numbers -- Sundays & Thursdays  
Odd numbers -- Wednesdays & Saturdays  
No address number -- Sundays & Thursdays

### **In Memoriam – Charles (Chuck) Schneider (1929-2021)**

*Contributed by Helen Schneider and Janice Coffee*

Our longtime neighbor, Charles (Chuck) Schneider passed away peacefully on April 13, 2021, surrounded in love by his wife, Helen, and his daughter, Shelley. He was 91 years old and had been married to Helen for 64 years.

The Schneiders have lived at 412 Mayrant since 1963 and were instrumental in forming the neighborhood association, which met at Wyatt's Cafeteria in Wynnewood Village Shopping Center.

Chuck was born on September 13, 1929, in Topeka, Kansas, to his parents Leta and Alvin Schneider. He proudly served his country during the Korean Conflict as a Flight Engineer in the US Navy. Afterwards he graduated from Texas A&M majoring in Aerospace Engineering. He then spent 39 years as a Senior Flight Engineer Specialist at Vought proudly holding top secret clearances. He retired in 1995 and continued to enjoy fishing, joking, chewing his cigars, and coaching softball, especially his daughter's team. Many of us have enjoyed his stories for years.



Other members of his family included grandchildren Wesley, Ryan, and Riley Stunard, and nephew Gary Harvanek. Preceding Chuck in death was his foster son, 1st Lt. Raymond Caswell.

Chuck's funeral service was held at Kessler Park United Methodist Church on April 22 with interment at the DFW National Cemetery.

### OH, HOLY LANDSCAPE!

*Contributed by Jenny Wegley*

Spring has sprung and 'Mother Nature' is fast on the move to produce deeper roots, new leaves and the start of flowering. If you stroll around your yard and the thought comes to mind, where do I begin, where do I start then this article is worth the 3-minute read.

When I was asked to write about what is happening horticulturally, in general terms, I struggled on how to present this information to a pool of homeowners that have a varying degree of knowledge in gardening. I was not sure how to interpret my knowledge, so I decided to make a list, as I do daily. Below is a general outline. I hope that all neighbors find this helpful!

#### **General Garden and Turf Maintenance**

##### **Fertilizing the landscape**

When plant material is actively growing, they are heavy feeders.

Liquid fertilizer: usually used on the landscape, can be used on turf

Applied with a dial in sprayer

Hit the soil and leaves

Do not use in warm temperatures or in the heat of the day

Granular fertilizer: usually used on turf. Product dependent can be used on landscape

Applied with a handheld or push spreader

Water lightly before applying

**TIP:** use the test cycle on your irrigation system

##### **Cutting back or trimming plant material**

Cut back all herbaceous material to the ground

Remove dead material from woodies and perennials

When cutting if you see green, it is still alive

Trim for aesthetic of evergreens

##### **TIPS:**

Add compost to landscape beds-as needed

Add mulch to landscape beds-as needed

Add organic nutrients to landscape beds and turf

Good time to add new material to the landscape, including trees. Although, I prefer fall for tree planting.

##### **Tree Care**

Limb young trees to form proper growth when mature-NOT OAK SPECIES

Removal of dead wood from trees-NOT OAK SPECIES

DO NOT PRUNE OAK SPECIES UNTIL MUCH WARMER TEMPERATURES. SUDDEN OAK DEATH (SOD)

**TIP:** Hire a qualified certified arborist that has insurance

##### **Buying New Material**

The Plant Geek in me cannot wait for spring nursery shopping. Looking at all the eye candy that a nursery has to offer often leads to exciting new designs. I have an advantage that I know how most plants on display will respond in my garden. It can be overwhelming, and the result can be disappointing.

(Cont. next page)







## Beautification

### Oh, Holy Landscape (Cont.)

Trust me, my wisdom comes from the death of many plants. Here are a few tips that can help.

USDA Zone (Dallas) 8a

Know the conditions if looking for plants for a specific location. Also know the direction that your home faces. (north, south, east, west)

Sun

Part sun

Shade

Soil type - Inquire for a soil test

Drainage

What are you looking for:

**Annual**-life cycle is one growing season and then dies

**Perennial**-life cycle is two or more years

**Evergreen**- has leaves all year long

**Semi-Evergreen**- may lose leaves, weather dependent (hard winter is usually the factor in leaf loss)

**Deciduous**- woody plants or trees that lose their leaves once per year and will leaf back out the next season.

**Herbaceous**- perennials that do not have woody growth and all foliage dies back once per year.

Plant tag or label: Plant requirements are often determined by the area which they are grown in and not the area they are sold in. Full sun in California is vastly different than full sun in Texas. It is more likely to reflect our zone, if grown in our zone. You can sometimes find where a plant is grown with indication on the tag or bar code label.



### Irrigation

Run an irrigation check

Make sure there are no geysers

Heads are working properly

Good coverage in all areas

**TIP:** if irrigation heads are not spraying fully take a knife or other small object and make sure there is no debris in the irrigation head.

Adjust irrigation times from winter to spring

Adjust each irrigation zone based on the condition of each (sun, shade, part sun, plant material etc.)

Water can be like the Goldilocks effect, you do not want plants to sit in water, but you do want a consistent level of moisture.

Recovering plant material from too little water is much easier than saving plant material overwatered.

**TIP:** Stick your pointer finger or a wooden pencil into the soil the length of your second knuckle on your pointer finger. You want a small amount of soil to stick to on your finger or pencil. This is roughly the ideal soil moisture level one wants.

Watering containers

Water until you see water coming out of the drain hole

Making your landscape the vision that you may hold in your head can be a heavy thought sometimes. If you need a landscape teacher/coach I am here to help. I am available for landscape consultations to give you the tools for gardening success! Please text or call 469-337-2674 to schedule a new insight to gardening.

**Hello spring, hello sun, I am glad you came!**





# Fundraisers

## FUNDRAISERS

Unfortunately, not many responded to the email blast asking for you to participate in a survey regarding fundraisers. At this point, if we get enough items, we will try to have the on-line auction.

Allen Anders and George Roberts will be handling this fundraiser.

There wasn't enough interest to have a Craft Fair as a way to raise monies for Wynnewood North.



©2nd2Nunn Photography 2020

The Hummingbirds have returned for the summer. Keep your feeders filled and fresh for a delightful bird show!

### DOES FIDO HAVE YOUR HOME SMELLING LIKE THE DOG HOUSE?



## SAY WHAT?!



FDA, CDC TESTED AND PROVEN TO ELIMINATE SARS-CoV2 AIRBORNE AND ON SURFACES IN 3 MINUTES!

WWW.PUREAIRLIVING.COM – 972-645-7546  
INFO@PUREAIRLIVING.COM



## Neighbors Helping Neighbors

### ADAMSON TEACHER APPRECIATION

*Contributed by Cynthia Michaels*

Wynnewood North Neighborhood Association received Community Block Grants from Heritage Oak Cliff amounting to \$350 for 2019 and 2020 to assist in paying for teacher appreciation for Adamson High School teachers. Our neighborhood is in Adamson's district, we have several neighbors who are alumni of the school. Wynnewood North's contribution to the cost was \$235. Total amount available for this project was \$585.

After discussions with the committee tasked with this project it was decided a small cash gift would be given to each teacher. The fees on gift cards were prohibitive. Since cash gifts are not allowed, the principal, Mrs. Diana Nunez, was able to receive approval for our cash donation. Due to only having \$585 to spend on this project it meant a drawing would have to occur and only 39 teachers would be able to receive the gift and be recognized. This was unacceptable to the WNNA committee.

Adamson High School has 102 teachers. The committee wanted to recognize each teacher with a small cash token of \$15.00 each. Two generous neighbors donated \$465 and \$480 respectively. Each teacher received a personalized card addressed to them by Janice Coffee (see photo). Each card contained \$15.00.

On March 24, 2021, President Denise Requardt and Vice-President Cynthia Michaels passed out the appreciation cards to the teachers at Adamson High School. They were so thrilled at our small gesture of appreciation. Please see a sampling of the emails received expressing their appreciation for our neighborhood's recognition of them. What a worthwhile project!!!

\*\*\*\*\*

My name is Rufki Salihi, and I am one of the teachers from Adamson HS that received the thoughtful gift this morning. I am grateful that your association thought of us and wanted to let you know that your generosity and kindness made our day truly a wonderful day.

Best wishes,  
Rufki Salihi

*A HUGE THANK YOU to The Wynnewood North Neighborhood Association for your generous donations to Adamson High School. We are so appreciative of your support and kindness! ❤️*

*Thank you,  
Krystle Martin*

I wanted to take a moment to thank everyone for the generous gifts you gave to our teachers this morning. It is so wonderful to know that our community supports us and it was just really nice and cool. Thank you and if we can support you and your organization in any way please let us know.

Leopard Pride never dies!!  
Brad Dominy

*Hi. Thank you and your organization for the generous gift you gave to me and my colleagues today. Your recognition of our work, especially in such a challenging year, is so appreciated.*

*Best regards,  
Marie-Clare Prisco*

(Continued on next page)



## Neighbors Helping Neighbors (Continued)

### (Adamson Teacher Appreciation Cont)

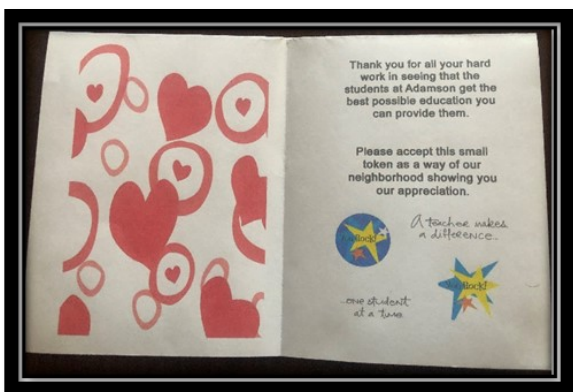
I am writing to express my gratitude for the generosity expressed yesterday through the Wynnewood North Neighborhood Association. Teachers often give beyond measure, seeking minimal, if any, recognition in return. You all took the time to consider us, and your financial gift left me speechless, and heart filled.

Thank you sincerely! Your thoughtfulness and kind gesture are appreciated.

Best and warmest regards,  
Ms. Patterson



WWNA Officers presenting gifts and cards



Card that accompanied gifts

*I am a teacher at WH Adamson. I received your association's teacher appreciation gift, and I wanted to convey my gratitude for such a wonderful surprise. Thank you very much, it made my day.*

*Have a nice day,  
Steven Berry*

I really appreciated the gift; it was very thoughtful! It felt like \$15,000 because it was perfect! Thank you again!!

Denise Jones

Congratulations

Tom and Dean!

New additions to the family -- Lab sisters River and Ursa!



**Garza Roofing & Remodeling**



**214.275.6666**

**Castro's Tree Service** Insured & Bonded

**Free Estimates**  
Jeff Castro  
Cell#: (214) 725-1171  
E-mail: jridefree@aol.com

**Oak Cliff's Best Choice for Quality Tree Care**  
Specializing in: Tree Trimming, Shaping & Removal

**YOUR HOME LOAN  
DESERVES A  
LOCAL  
PROFESSIONAL**



SUMMER GARRETT

your local mortgage lender

NMLS: #193763

summer@summergarrett.com

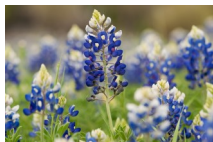
(972)880-9332



[summergarrett.com](http://summergarrett.com)







# The Kid Corner

Created by Addison who lives on Mayrant



## Spring

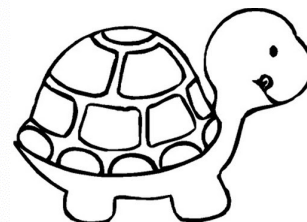
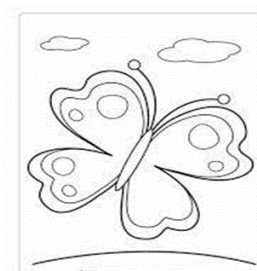
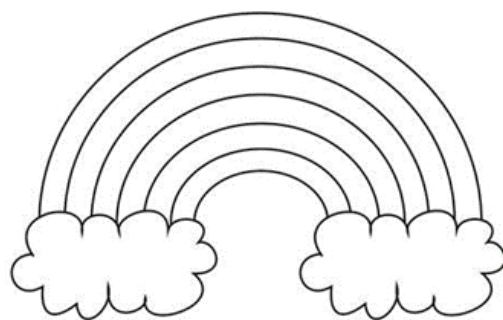


N G V S L C T J E D F P Z O R L B  
 E T O I P H R A S B I J E D M V G  
 L Z R M T A O C N I A R G T Y Q N  
 I P E J S N Y K F W H S L A I F I  
 A Y B E G M D E P T E Q E W C K R  
 D S O K R E N T Y L W H J B U I P  
 M U P H T B I L D E N O C Z A F S  
 K N T C D A W D G P L D B G P L M  
 F S E I R Z U N O S A E S N U B L  
 W H Z N A P R S M Y T L F M I W S  
 P I F C L E A N I N G E B H K A V  
 T N U I B M V R Z O F R C A W H R  
 M E D P H C R A M B E K L N S T G  
 X L F J Y A S N G L S H O W E R S  
 H B R E A K O P L V C Z U F Y D K  
 C F T X M U B A S I L W D H G N E  
 W I H P E D L J R Y Q B S A O X R

- |         |          |          |
|---------|----------|----------|
| APRIL   | BASEBALL | BREAK    |
| BREEZE  | CLEANING | CLOUDS   |
| JACKET  | KITE     | MARCH    |
| MAY     | PICNIC   | PUDDLES  |
| RAINBOW | RAINCOAT | SEASON   |
| SHOWERS | SPRING   | SUNSHINE |
| THAW    | UMBRELLA | WINDY    |



Tree Valley Academy



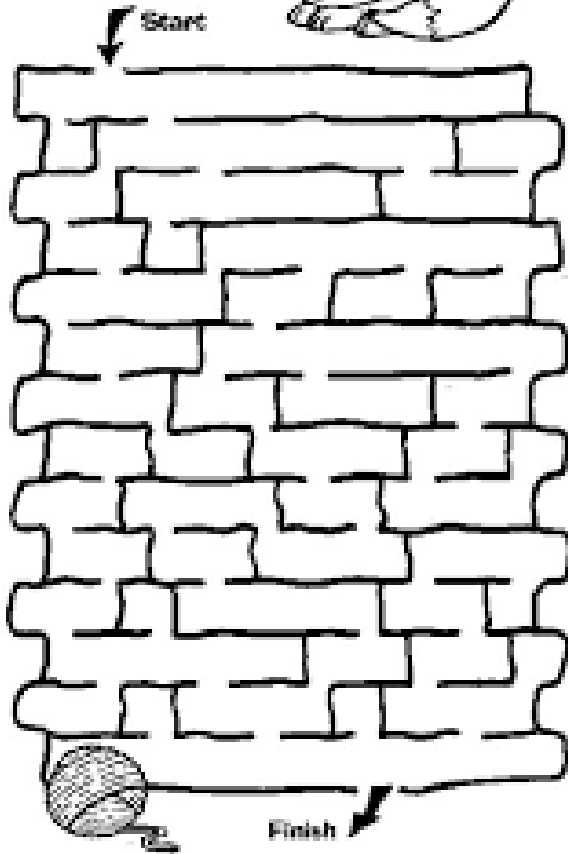
1. What do you call a flower that can't tell the truth?



2. Why do bananas use sunscreen?

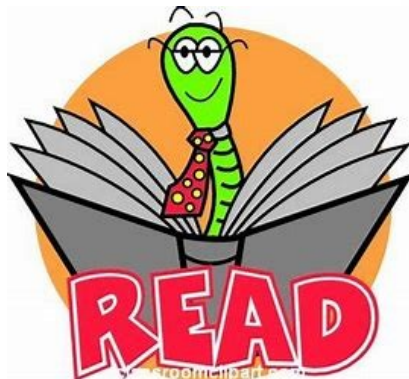
1. A lie-lac (lilac)!
2. Because they peel!

Help Kitty find her ball of yarn.



Draw yourself as a Flower!

Be sure to check out the little library to find your next favorite book!





## Wynnewood North Board of Directors

President	<u>Denise Requardt</u>	president@wynnewoodnorth.org
Vice President	<u>Cynthia Michaels</u>	vp@wynnewoodnorth.org
Secretary	<u>Cindy Kirk</u>	secretary@wynnewoodnorth.org
Treasurer	<u>Gary Ellis</u>	treasurer@wynnewoodnorth.org
Crime Watch	<u>David Williams</u>	crime@wynnewoodnorth.org
Communications	<u>Janice Coffee</u>	communications@wynnewoodnorth.org
Webmaster	<u>Paul Jolly</u>	webmaster@wynnewoodnorth.org
Beautification	<u>Cynthia Michaels</u>	beautification@wynnewoodnorth.org
Publications	Committee	publications@wynnewoodnorth.org
Social / Parent Liaison	Managed by Board	social@wynnewoodnorth.org

### Real Estate Statistics—Q1 2021 | Ric Shanahan

#### January 1—March 31, 2021

Properties Sold/Exchanged Ownership in MLS:.....6*
Lowest Overall Sold Price: .....\$280,000
Highest Overall Sold Price:.....\$650,000
Average List Price .....\$458,000**
Properties Currently for Sale:.....0
Properties Currently Under Contract.....2
Properties Coming Soon.....2
Average Sold Price:.....\$489,000
Lowest Sold Price/Square Foot.....\$164.95
Maximum Sold Price/Square Foot:.....\$284.99
Average Sold Price/Square Foot:.....\$216.64
Average days on Market:.....15
Square footage range of properties..1,593 – 3,943 sqft

\*Properties Listed & Sold though MLS

\*\*For all SOLD properties

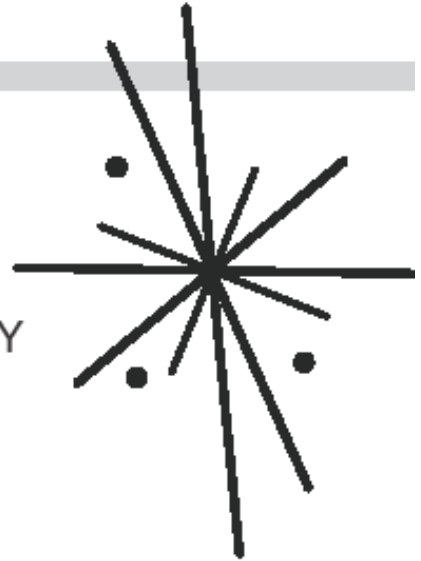
### Treasurer's Report—Gary Ellis

WNNA Financials as of March 31, 2021

Beginning Cash Balance - January 1, 2021	\$12,923.45
Year To Date Deposits	\$7,321.96
Year To Date Disbursements	<u>\$(2,658.79)</u>
Ending Cash Balance - March 31, 2021	<u>\$17,586.62</u>
<u>Year to Date 03.31.2021</u>	
Total Revenue	\$7,271.96
Total Expenses	<u>\$(2,608.79)</u>
Net Income/<Loss> - YTD March 31, 2021	<u>\$4,663.17</u>



**Ric Shanahan Team**  
BUYING AND SELLING MADE EASY



Your resource, neighbor, and  
REALTOR® in Wynnewood North

[www.getric.kw.com](http://www.getric.kw.com) | 214.289.2340  
[ric@ricshanahan.com](mailto:ric@ricshanahan.com)